

Les Ateliers

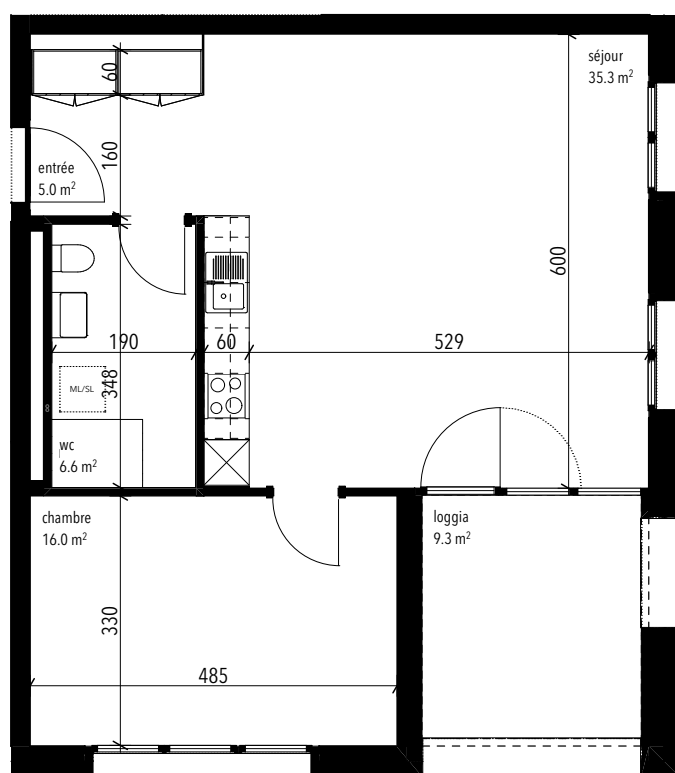
Contactez-nous

PMB Gérance Sàrl

+41 27 723 51 91

info@pmbgerance.ch

www.pmbgerance.ch



Appartement 05.03.04

Avenue de Tourbillon
1950 Sion

| | |
|------------------|-----------------------|
| Niveau | +3 |
| Bâtiment | A |
| Typologie | 2.5 pièces |
| Sol zone de jour | parquet |
| Surface locative | ~ 62.9 m ² |
| Surface terrasse | ~ 9.3 m ² |
| Surface cave | ~ 3.3 m ² |
| Sans obstacle | oui |

| | |
|-------------------|---------|
| Loyer net | 1'345.- |
| Acompte de charge | 170.- |
| Loyer brut | 1'515.- |

